

LaHabra® Elastomeric Finish



LaHabra

LaHabra® Elastomeric Finish

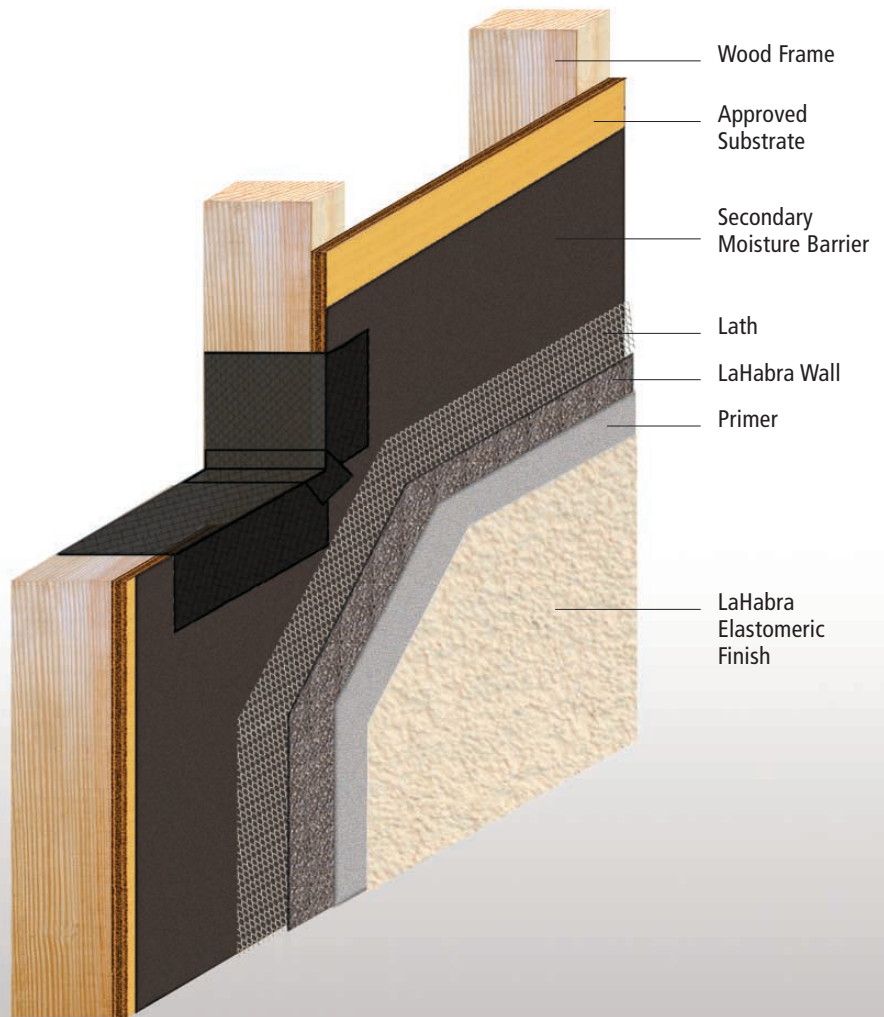
LaHabra Elastomeric over La Habra Wall or Portland Cement Base Coat

The benefits of a cementitious substrate with the advantages of an advanced elastomeric finish.

Most cement based products develop minute surface cracks during their cure cycle. These can be microscopically small, or they can be visible to the naked eye.

Either way, cure-induced surface crazing or cracking can usually be covered by a flexible finish provided the cracks do not exceed 1/16" in width. The finish of choice for this normal condition has traditionally been one formulated from elastomeric compounds, capable of maintaining its flexibility over a wide range of temperature and weather conditions.

LaHabra Elastomeric Finishes are formulated from improved polymers with better capabilities to stretch and return to their original dimensions as a wall expands, contracts and flexes. Minute surface cracks are kept beneath the **LaHabra Elastomeric** membrane, invisible and protected from the elements.



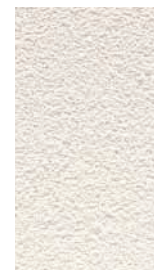
More Flexible

Elastomeric finishes are designed to stretch and recover, hiding cracks that may form in cementitious stucco products. Elastomeric finished keep your project looking new longer.

Excellent Coverage Fade Resistant



Easier to Maintain



Improved resistance to Dirt Pick-Up



Do's

- Do** use primer for best results.
- Do** follow code guidelines for all stucco installations.
- Do** give stucco substrates adequate time to cure before finishing.
- Do** patch cracks larger than 1/16" before applying finish.
- Do** maintain a "wet edge" while working with finishes.

Don'ts

- Don't** apply finish to uncured stucco.
- Don't** attempt to bridge cracks greater than 1/16" with finish.
- Don't** apply finish to dirty or contaminated surfaces.
Clean them first.
- Don't** over-mix finish. Avoid aeration.

Why LaHabra Elastomerics?

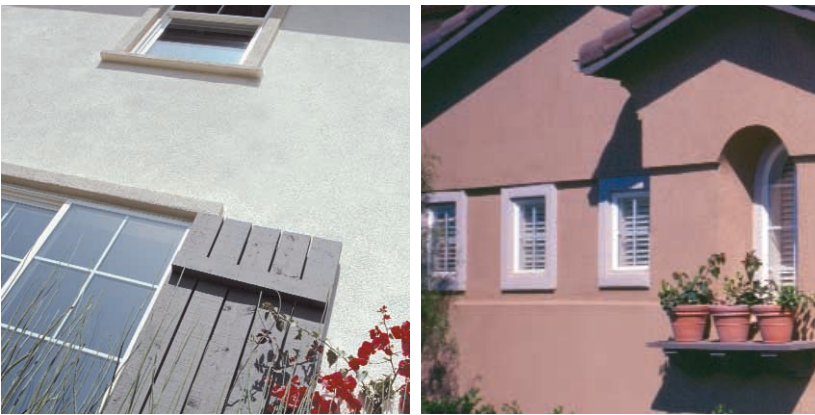
LaHabra Elastomeric Finishes offer better performance over traditional, more difficult-to-use elastomeric finishes.

LaHabra Elastomeric Finishes are more durable, more resistant to dirt pick-up and easier to maintain than traditional elastomerics.

LaHabra Elastomeric Finishes are easier to work with and have a harder surface than traditional elastomerics. They provide more resistance to airborne dirt and pollutants. This harder surface means the finishes stay looking new longer.

LaHabra Elastomeric Finishes come in 30 standard LaHabra colors, and can also be custom mixed to match your needs.

Use **LaHabra Elastomeric Finishes** over stucco to bridge minute surface cracks up to 1/16" in width, or where improved resistance to dirt and/or thermal movement is indicated.



Finish Choices

LaHabra's Elastomeric Finishes are available in the full spectrum of LaHabra colors, or mixed to your custom specifications.

LaHabra Elastomeric Fine



LaHabra Elastomeric Coarse





Description

- A. Use: Finishing coat for: LaHabra Wall, new or existing stucco and concrete surfaces, renovation of old stucco and concrete walls, finishing of masonry walls in combination with a Portland cement brown coat.
- B. Advantages: 100% acrylic-based elastomeric textured coating, dirt pick-up resistance. Chemistry: Highly flexible: can bridge hair-line cracks. Integrally colored with high quality pigments.

Composition

Binder base: 100% Acrylic elastomeric polymer with surface-hardening property.
 Aggregate: Pure crushed marble, rust-free.
 Water-based: VOC compliant
 Pigment base: Titanium dioxide
 Color: LaHabra standard colors or tinted to desired custom color.

Packaging

65 lbs. (29.5 kg) net weight in plastic pails.

Storage

Elastomeric Finish should be protected from sun and freezing at all times. Properly stored Elastomeric Finish has a useable lifetime of approximately one (1) year from date of manufacture if protected from sun and frost.

Coverage

LaHabra Fine – Aggregate Size: 0.75mm
 150 – 165 ft² (14 – 15m²) /pail
 LaHabra Coarse – Aggregate size: 1.5mm
 120 – 135 ft² (11 – 12.5m²) /pail
 Note: Coverage may vary depending on the condition of the substrate, method of application and finish thickness.

Job Procedure

- A. Surface Preparation.
 - 1. Over stucco portland cement plaster or LaHabra Wall: prime with LaHabra Primer or LaHabra Sanded Primer. Over masonry or concrete: level with a Portland cement base coat or other compatible products and prime with LaHabra Primer.
 - 2. Over painted substrates: paint must demonstrate adequate adhesion or be removed with methods which result in no more than 10 percent of the surface having paint remaining. Prime with LaHabra Primer.
 - 3. For application of LaHabra Primer refer to the Product Data Sheet.
 - 4. For additional options, contact LaHabra Technical Services Department.
- B. Mixing:
 - 1. Stir to obtain a homogeneous consistency using a heavy-duty 1/2 in. (13mm) drill with a rust-free paddle at 400-500 r/min. Avoid air entrapment.
 - 2. A small amount of clean, potable water may be added to aid workability. Do not exceed 8 oz. (1 cup) (.24 L) per full pail of finish. To avoid texture variation, add the same amount of water to each pail of finish.
- C. Application:
 - 1. Always maintain a wet edge and work to corners or joints. For best color consistency, use finish with the same batch number within a wall section. Keep container closed when not in use.
 - 2. Application: use a clean stainless steel trowel and apply a uniform coat the thickness of the largest aggregate size of the finish.
 - 3. Texturing: use a clean plastic float or stainless steel trowel, wipe frequently and apply moderate pressure with consistent motion, rolling the large aggregates to obtain the desired texture.

- D. Drying time: 48 hours under normal conditions. High humidity and low temperatures extend drying time.
- E. Clean-up: Water soluble prior to drying. Clean tools and containers with water prior to drying.

Cautions and Limitations

- 1. Ambient and surface temperatures must be 40° F (4° C) or above during application and drying time. Supplemental heat and protection from precipitation must be provided as needed.
- 2. Use only on surfaces that are sound, clean, dry, and free from any residue which may affect the ability of the finish to bond to the surface.
- 3. Avoid application in direct sunlight in hot weather.
- 4. Due to the composition of this product, minor pin-holing may be noticeable in the cured finish.
- 5. This information is designed to guide you and has been conscientiously compiled according to the latest state of our technology.
- 6. No liability can be accepted with the use of the product because of the great variety of applications and working conditions.

Testing:

- A. Environmental Durability: passes ASTM G 23 resistance to accelerated weathering and ultraviolet test.
- B. Resistance to wind-driven rain: (TT-C-555b): Pass
- C. Mildew Testing: (ASTM D3273): No growth.
- D. Vapor Permeability: (ASTM E96): Greater than 10 perms. Water-vapor permeable; does not create a vapor barrier.



Corporate Office

ParexLaHabra, Inc.
 P.O. Box 17866
 Anaheim, CA 92817
 4125 E. La Palma, Suite 250
 Anaheim, CA 92807
 Phone: 1-877-LHSTUCCO
 Fax: 714-774-2079
Email: info@lahabrustucco.com
lahabrustucco.com

Sales Offices & Warehouses

Anaheim
 P.O. Box 3700
 1631 W. Lincoln Ave.
 Anaheim, CA 92803
 Phone: 714-774-1186
 Fax: 714-774-8599

North Hollywood
 8161 Lankershim Blvd.
 North Hollywood, CA
 91605-1611
 Phone: 818-504-9180
 Fax: 818-504-1985

Northern California
 11290 South Vallejo Court
 French Camp, CA 95231
 Phone: 209-983-8808
 Fax: 209-983-8873

Riverside
 2150 Eastridge Ave.
 Riverside, CA 92507
 Phone: 951-653-3549
 Fax: 951-653-8189

Dallas
 Warehouse
 P.O. Box 188
 Cresson, TX 76035
 Phone: 972-820-8258
 Fax: 972-467-5836
Customer Service
 Phone: 1-877-LHSTUCCO
 Fax: 714-774-8599

